



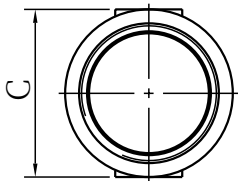
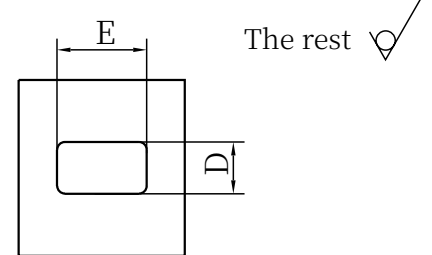
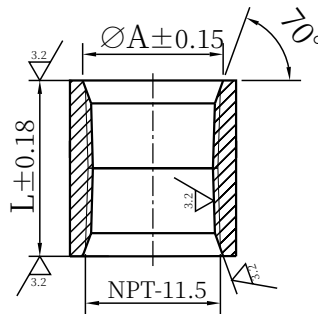
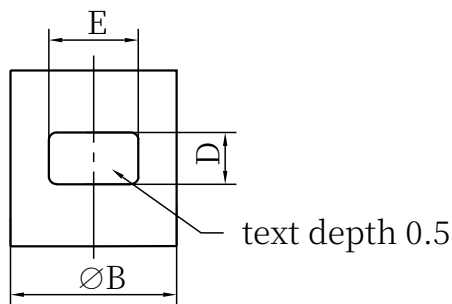
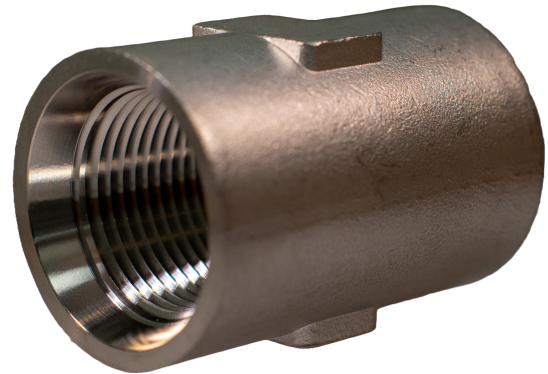
Spec Sheet: Stainless Steel Drop Coupling (DCS)

Features

- Durable and strong
- Available 1", 1-1/4", 1-1/2", 2"

Technical Requirments

- The surface of the parts should not have scratches, bruises and other damage to the surface defects of the parts.
- Remove burrs, sharp edges, and blunt edges.
- No chamfer $C \leq 0.5$.
- Dimension tolerance according to ISO 8062 CT8.



Item No.	SIZE	$\varnothing A \pm 0.15$	B	C	D	E	$L \pm 0.18$	NPT
DCS-10	1"	36.8	42.3	43.0	15.8	24.0	63.0	1" -11.5
DCS-12	1-1/4"	42	54	55	18	25	60	1-1/4" -11.5
DCS-15	1-1/2"	57	50	57	18	25	60	-11.5 1-1/2"
DCS-20	2"	65	60	70	18	35	60	-11.5 2"

Casting System of Linear Dimensional Tolerances ISO 8062 (GB/T 6414)										
Tolerances	Nominal Dimension									
	0~10	>10~16	>16~25	>25~40	>40~63	>63~100	>100~160	>160~250	>250~400	>400~630
CT8	±0.5	±0.55	±0.6	±0.65	±0.7	±0.8	±0.9	±1.0	±1.1	±1.3



WARNING: This product can expose you to chemicals including Lead, which are known to the State of California to cause cancer and birth defects or other reproductive harm. For more information go to: www.P65Warnings.ca.gov
Wash hands after handling.