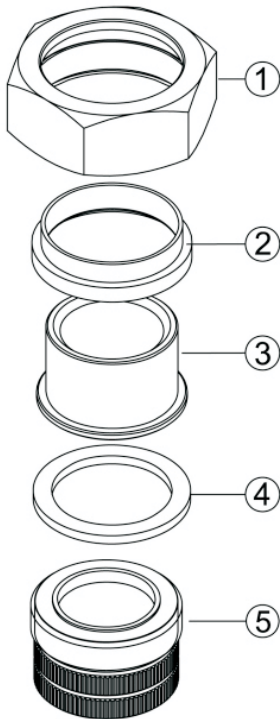
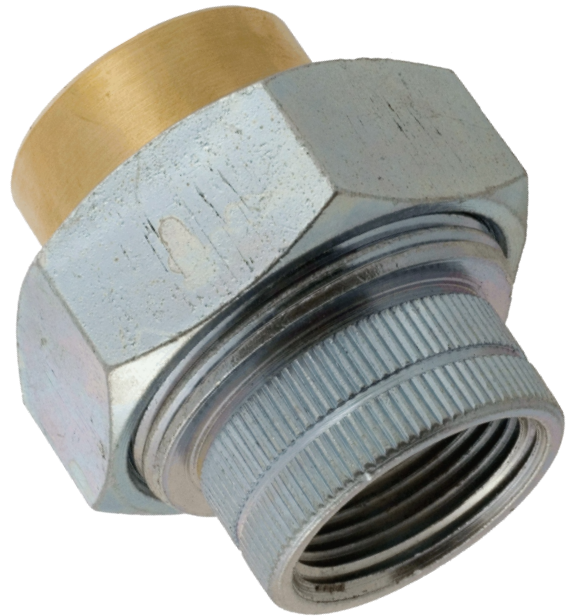


# Dielectric Union (DU)

## Features

- Galvanized x Brass
- Maximum working water pressure: 250 PSI
- Maximum working water temperature: 210°F
- Thread connections: ANSI B1.20.1
- Copper connections: ANSI B16.18
- Available in sizes: 1/2" - 2"
- IAMPO/UPC-NSF 61.4/AB1953 listed



## MATERIAL SPECIFICATION

No.	Parts	Materials
1	Coupling Nut	Forged Steel
2	Insulator	Nylon
3	Solder Adapter	Forged Brass
4	Washer	EPDM
5	FIP Adapter	Forged Steel

## Dimensions

Part No.	Nominal Size	A-Solder	B	C	D-FIP
DU1320	1/2" x 1/2"	1/2"	1-23/32"	1-5/8"	1/2"-14NPT
DU1321	3/4" x 3/4"	3/4"	2-15/16"	1-7/8"	3/4"-14NPT
DU1322	3/4" x 1/2"	1/2"	1-3/4"	1-7/8"	3/4"-14NPT
DU1323	1" x 1"	1"	2-9/32"	2-1/8"	1"-11.5NPT
DU1324	1 1/4" x 1 1/4"	1 1/4"	2-13/32"	2-9/16"	1 1/4"-11.5NPT
DU1325	1 1/2" x 1 1/2"	1 1/2"	2-19/32"	3"	1 1/2"-11.5NPT
DU1326	2" x 2"	2"	3"	3-13/16"	2"-11.5NPT

